



Cartridges

Disposable plastic cartridges are available in 1, 2.5, 6, 8, 12, 20, 32 oz. and 1/10th gallon capacities. Available in low or high-density natural polyethylene, all sizes are fit with 1/4" NPT female thread dispensing orifice. Special colors are available, however minimum order, lead time, and pricing considerations apply.

The cartridges are capable of handling a wide variety of chemical fluids for storage and application and can be easily adapted to both pneumatic and manual dispensing systems. Semco® cartridges are commonly used in single component or pre-mixed and frozen applications with polysulfides, solder pastes, adhesives, epoxies, urethanes, greases, acrylics, etc.

CP and CWP cartridges are the standard Semco® cartridge with either a P or WP plunger inserted. This inserted plunger allows for filling from the dispensing end, reducing the potential for air entrapment and improving production rates.



Cartridges with Plungers Inserted

Description	Part Number
CP 2.5 oz. LD	220323
CP 2.5 oz. HD	220324
CP 6 oz. LD	220325
CP 6 oz. HD	220326
CP 8 oz. LD	220327
CP 8 oz. HD	220328
CP 12 oz. LD	220329
CP 12 oz. HD	220330
CWP 1 oz. LD	232375
CWP 2.5 oz. LD	220331
CWP 2.5 oz. HD	220332
CWP 6 oz. LD	220333
CWP 6 oz. HD	220334
CWP 8 oz. LD	220335
CWP 8 oz. HD	220336
CWP 12 oz. LD	220337
CWP 12 oz. HD	220338
CWP 20 oz. HD	230231
CWP 32 oz. SHD white	233710
CWP 1/10 gallon HD	230268

Cartridges Only

Description	Part Number
1 oz. LD	220307
1 oz. HD	233222
2.5 oz. LD	220315
2.5 oz. HD	220316
6 oz. LD	220317
6 oz. HD	220318
8 oz. LD	220319
8 oz. HD	220320
12 oz. LD	220321
12 oz. HD	220322
20 oz. HD	229734
32 oz. LD	232921
32 oz. HD	232917
32 oz. SHD white	233656
1/10 gallon LD	230285
1/10 gallon HD	229689

CALL TO ORDER (800)237-6649



Plungers

Precision molded plungers are available in three styles. Each style has its own functional characteristics. All are designed to fit the cartridge contour, assuring complete dispensing and the elimination of waste.

The WP or Wiper Plunger has the highest amount of interference. This provides the most complete wiping action on the cartridge inside diameter. The P-plunger has medium interference. It provides clean wiping action, inserts easily, and allows evacuation of entrapped air. The PRS or Pressure Relief Plunger has the least interference. It has been specifically designed to be easily inserted and reduce air entrapment during filling and dispensing. This dramatically reduces problems with dripping or stringing during dispensing.



Plungers Only

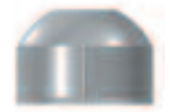
Description	Part Number
1 oz. WP-Plunger LD	232364
P-Plunger LD (black)	220252
WP-Plunger LD	220259
WP-Plunger HD	220260
PRS-Plunger LD	234414
20/32 oz. WP-Plunger LD	229221
20/32 oz. WP-Plunger HD	232374
1/10 gallon WP-Plunger LD	229756



P Plunger



Wiper Plunger



PRS Plunger

Seals and Flange Caps

Seals and Flange Caps are used to ensure retention of the plunger during shipping and storage. The standard color is red. Special colors are available, however minimum order, lead time, and pricing considerations apply.

The Flange cap or F-cap is designed to fit over the large open end of the cartridge. There are three seal styles for the dispensing end. The TC-seal is a threaded part that matches perfectly with the dispensing orifice. The TS-seal contacts on three surfaces around and inside the dispensing end of the cartridge. The S-seal fits over the outside of the dispensing orifice only.



Seals and Caps

Description	Part Number
1 oz. F-Cap (red)	232452
F-Cap (red)	220238
1/10 gallon F-Cap (red)	230502
20 & 32 oz. F-Cap (red)	230586
S Seal (red)	220257
TS Seal (red)	220245
Threaded Cap (red)	234411

CALL TO ORDER (800) 237-6649